



Investor's Report:

Greetings from all of us at Dogs for the Deaf! If you're receiving this new communication, it is because you are among those who have been faithfully "investing" in the important work we do to save the lives of dogs and enrich the lives of people. We will be sharing important information with you every quarter so that you are one of the first to know what is happening on our busy 40 acres and across the nation. Of course you are welcome to unsubscribe but we hope you won't. It's just another way to show you how much your caring support matters when you write a check or submit your online gift. *You do make a difference every day! And we thank you.*

Local Media Helps Share Our Need for Foster Families in Southern Oregon

Kristin Hosfelt from KOB-TV News 5 in Medford, Oregon recently interviewed Training Director, John Drach, about the growing need for foster puppy families in support of our Autism Assistance Dog program. "There's no specific thing that we require other than you love dogs, you can attend class regularly, and you're willing



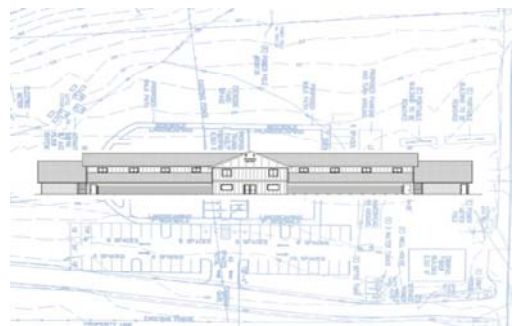
to put the time and effort to prepare these dogs for the next step of their lives."

We are grateful for the amazing foster families who currently care for our puppies. With two more puppies arriving this spring, we are excited to expand our foster program to support the growing need for Assistance Dogs nationwide. [Visit the KOB! News 5 website to view the story.](#)

To learn more about our Foster Puppy Program and the opportunity to support it, please visit our Foster a Dog webpage.

Second Training Facility Breaks Ground

Dogs for the Deaf is experiencing significant growth in all of its Assistance Dog programs and as a result, we are excited to announce the construction of our Second Training Facility slated for completion this Fall.



Early design of the new Training Facility, which will be more than 18,000 sq ft, two levels, and house approximately 42 kennels.

Our current training facility consists of 22 kennels and 4 training spaces (located directly above the kennels) designed to simulate home living environments.

The new training facility is designed with 42 kennels – nearly double the kennels in our current training facility. In addition, the new training facility will have five training spaces that imitate home environments. One of these spaces will include stairs and two stories. Other enhancements include three large inside open space training areas, and a service elevator which can only be used for elevator training.

A local construction company in Medford, Oregon has been contracted for this important design-build project, working directly with our operations team. As the project continues to progress, Dogs for the Deaf will share quarterly updates with you, our key partners, through this special e-newsletter called The Investor's Report. Due to your level of partnership, many times you will be the first to know before we post updates to our website, social media and Impact Reports that follow.





Demo dog Buzz, approves of the CASE 580 Super L tractor on the new construction site.



Photo (From left): Kenneth Reeder (board member), Annette Vitello (Operations Director), John Drach (Training Director), and Blake Matray (President & CEO)



Accounting Manager Meagan Steahly touring around the construction site with demo dog Keen.



Volunteer dog walker Donna, passing in front of the new construction site, where Dogs for the Deaf's 18, 000 sq ft second training facility will reside.

Dogs for the Deaf Turns 40!

It was in January 1977 that founder Roy Kabat initiated his vision of a national nonprofit organization located in Southern Oregon, working to rescue, professionally train, and place assistance dogs to restore independence to people's lives.

As we celebrate our 40th anniversary all year long, we are moving forward on an amazing adventure, including:

-



Breaking ground on a new 18,000+ sq ft, 42-kennel training facility, to compliment the existing 22-kennel training building.

- Sending our new Ford Transit 250 Van on the road, traveling the west-coast, while picking up rescue dogs, participating in community events, and meeting with individual donors.
- Expanding our Autism Assistance Dog program, working to place more dogs in southern Oregon's Rogue Valley, with eventual plans to expand across Oregon, the west coast, and ultimately the entire United States.
- Adopting a new logo and business name to share our expanding mission while remaining true to our never changing practice of rescuing and placing dogs for those who seek greater independence in their lives.

We will be sure to update you on a future 40th Anniversary Celebration being planned for this milestone year!



Copyright © 2017 Dogs for the Deaf, Inc., All rights reserved.

You are receiving this email because you opted in at our website or requested that we add you to our online e-mail list.

Questions or Feedback? Please email info@dogsforthedeaf.org.

Our mailing address is:

Dogs for the Deaf, Inc.
10175 Wheeler Road
Central Point, Oregon 97502

[Add us to your address book](#)

Want to change how you receive these emails?

You can [update your preferences](#) or [unsubscribe from this list](#)